

# Wind Power GeoPlanner™

## Land Mobile Report

### Allegany Wind Power Project



Prepared on Behalf of  
Environmental Design  
and Research

January 8, 2010



**COMSEARCH**  
A CommScope Company



## **Table of Contents**

<b>1. Introduction</b>	<b>- 1 -</b>
<b>2. Summary of Results</b>	<b>- 2 -</b>
<b>3. Contact Us</b>	<b>- 5 -</b>



## **1. Introduction**

Comsearch compiles and provides information on land mobile sites identified within or near a defined area of interest related to proposed wind energy facilities. This information is useful in the planning stages of the wind energy facilities to identify fixed land mobile stations where critical telecommunication services are provided such as emergency (police, fire, 911, e.g.) response, public safety and local government communications, or industrial and business wireless radio operations. This data can be used in support of the wind energy facilities communications needs or to avoid any potential impact to the current land mobile services provided in that region.

## 2. Summary of Results

### Methodology

Our land mobile report is derived from the FCC's Universal Licensing System (ULS). The data is imported into GIS software and the land mobile sites are geographically mapped with the wind energy area of interest defined by the customer. Each site on the map is identified with an ID number associated with site information provided in a data table.

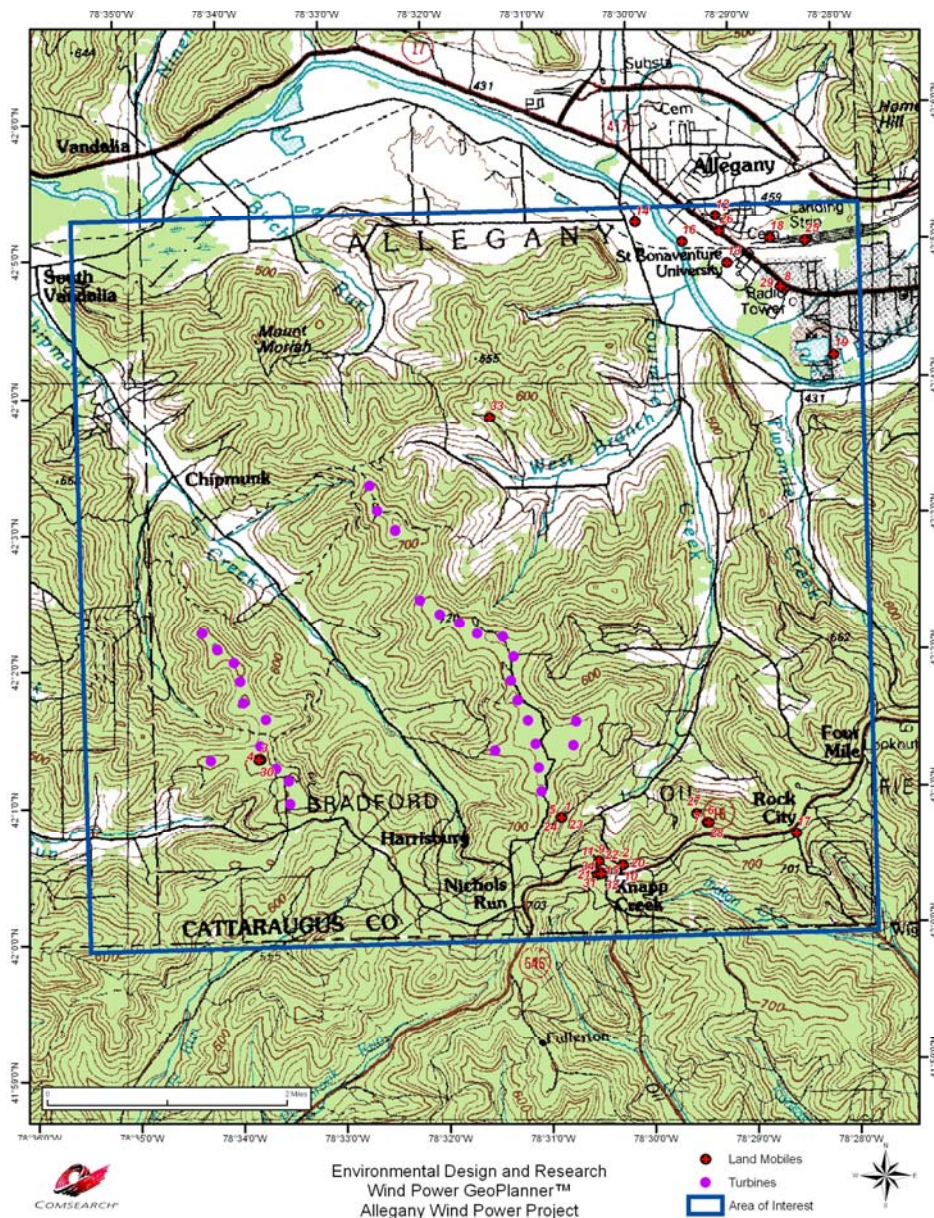


Figure 1: Land Mobile Sites in the Area of Interest

## Results

Figure 1 identifies 34 land mobile sites within the wind energy area of interest using the data sources described in our methodology above. The majority of the towers are located in Knapp Creek and Olean, NY. Specific information about these sites is provided in Table 1 including location coordinates, frequency band, antenna height above ground level, and licensee name. Most of the land mobile sites licensed to county and state entities are providing critical public safety and emergency communications.

ID	Callsign	Frequency Band (MHz)	Licensee	Antenna Height AGL (m)	City	ST	Latitude (NAD83)	Longitude (NAD83)
1	KCZ767	150-174 MHz	POTTER LUMBER CO INC	61.0	KNAPP CREEK	NY	42.013944	-78.513917
2	KDP395	25-50 MHz	CATTARAUGUS, COUNTY OF	15.0	KNAPP CREEK	NY	42.007833	-78.504194
3	KED905	150-174 MHz	NEW YORK, STATE OF	36.0	HARRISBURG	NY	42.022000	-78.562528
4	KED905	25-50 MHz	NEW YORK, STATE OF	36.0	HARRISBURG	NY	42.022000	-78.562528
5	KEF917	450-470 MHz	DAN GERNATT GRAVEL PRODUCTS INC	61.0	KNAPP CREEK	NY	42.013944	-78.513917
6	KGZ642	150-174 MHz	Norfolk Southern Railway Company	45.0	OLEAN	NY	42.012833	-78.490306
7	KGZ642	150-174 MHz	Norfolk Southern Railway Company	50.0	OLEAN	NY	42.012833	-78.490306
8	KJT467	25-50 MHz	BACKYARD BROADCASTING OLEAN LICENSEE, LLC		OLEAN	NY	42.077556	-78.475306
9	KNBS753	25-50 MHz	BUCHER DRILLING CO INC	52.0	LEAN	NY	42.008389	-78.508083
10	KNDL464	150-174 MHz	CATTARAUGUS, COUNTY OF	59.0	KNAPP CREEK	NY	42.007833	-78.504194
11	KRS841	150-174 MHz	CAL BAN CORP	43.0	OLEAN	NY	42.008389	-78.508083
12	KRZ901	150-174 MHz	ALLEGANY, VILLAGE OF	15.0	ALLEGANY	NY	42.086722	-78.486139
13	KUK480	450-470 MHz	ST BONAVENTURE UNIVERSITY	16.0	SAINT BONAVENTURE	NY	42.080889	-78.484472
14	KUZ800	150-174 MHz	ALLEGANY, TOWN OF	18.0	ALLEGANY	NY	42.086167	-78.499194
15	WNAL742	150-174 MHz	RAM FOREST PRODUCTS INC	52.0	KNAPP CREEK	NY	42.008389	-78.508083
16	WNJB206	150-174 MHz	New York State Department of Environmental Conservation Office For Public Protection	12.0	ALLEGANY	NY	42.083611	-78.491667
17	WNLA616	150-174 MHz	Schuylkill Mobile Fone, Inc.	57.0	OLEAN	NY	42.011167	-78.475861
18	WNNY405	150-174 MHz	Norfolk Southern Railway Company	6.1	OLEAN	NY	42.083778	-78.477389
19	WNQT902	25-50 MHz	OLEAN, CITY OF	12.0	ALLEGANY	NY	42.069500	-78.467528
20	WNQT903	25-50 MHz	OLEAN, CITY OF	15.0	KNAPP CREEK	NY	42.007833	-78.504194
21	WNXE913	150-174 MHz	SAIA COMMUNICATIONS INC	55.0	KNAPP CREEK	NY	42.006722	-78.508361
22	WNXQ445	25-50 MHz	CATTARAUGUS, COUNTY OF	61.0	KNAPP CREEK	NY	42.007833	-78.504194
23	WNZK764	450-470 MHz	SAIA COMMUNICATIONS INC	61.0	KNAPP CREEK	NY	42.013944	-78.513917
24	WPEM202	800/900 MHz	NEXTEL WIP LICENSE CORP.	61.0	KNAPP CREEK	NY	42.013944	-78.513917
25	WPMX789	150-174 MHz	Norfolk Southern Railway Company	12.0	OLEAN	NY	42.083389	-78.471694
26	WPNU411	450-470 MHz	ST ELIZABETH MOTHERHOUSE	14.0	ALLEGANY	NY	42.084778	-78.485583
27	WPNX454	421-430 MHz	ERIE, COUNTY OF	15.0	AKRON	NY	42.013944	-78.491972
28	WPPY513	450-470 MHz	BRICO TECHNOLOGIES, INC	55.0	KNAPP CREEK	NY	42.012833	-78.490028

*Continued on the Next Page...*

ID	Callsign	Frequency Band (MHz)	Licensee	Antenna Height AGL (m)	City	ST	Latitude (NAD83)	Longitude (NAD83)
29	WPSG523	150-174 MHz	MOBILE COMMUNICATION SERVICE	60.0	ROCK CITY FALLS	NY	42.077833	-78.475861
30	WPVX230	800/900 MHz	New York, State of	50.0	KNAPP CREEK	NY	42.021944	-78.562778
31	WQBD817	150-174 MHz	Western New York & Pennsylvania Railroad LLC	54.0	KNAPP CREEK	NY	42.006833	-78.507778
32	WQBD817	450-470 MHz	Western New York & Pennsylvania Railroad LLC	54.0	KNAPP CREEK	NY	42.006833	-78.507778
33	WQBH658	150-174 MHz	Camp Li-La-Li Inc	54.8	Randolph	NY	42.062972	-78.523778
34	WQHI491	450-470 MHz	SAIA COMMUNICATIONS, INC.	60.9	KNAPP CREEK	NY	42.006833	-78.507806

*Table 1: Summary of Land Mobile Sites*

In planning the wind energy turbine locations in the area of interest, a conservative approach would dictate not locating any turbines in close proximity to these land mobile sites to avoid any possible impact to the communications services provided by these stations. However, the frequencies of operation used by the land mobile sites are generally unaffected by the presence of wind turbines. In the unlikely event that a land mobile licensee believes their coverage has been compromised by the presence of the wind energy facility, they have many options to improve their signal coverage to the area through optimization of a nearby base station or even adding a repeater site. Utility towers, meteorological towers or even the turbine towers within the wind project area can serve as the platform for a land mobile base station or repeater site.



### **3. Contact Us**

For questions or information regarding the Land Mobile Report, contact:

Contact person:	Denise Finney
Title:	Account Manager
Company:	Comsearch
Address:	19700 Janelia Farm Blvd., Ashburn, VA 20147
Telephone:	703-726-5650
Fax:	703-726-5595
Email:	<a href="mailto:dfinney@comsearch.com">dfinney@comsearch.com</a>
Web site:	<a href="http://www.comsearch.com">www.comsearch.com</a>